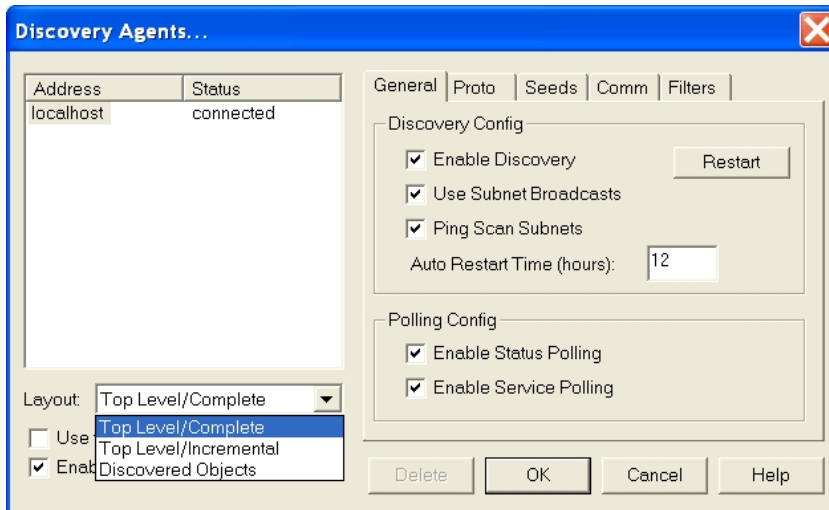


## How to configure Auto-Discovery for Optimal results

The auto-discovery is configured from the Config/Discovery Agents menu.

The General Tab



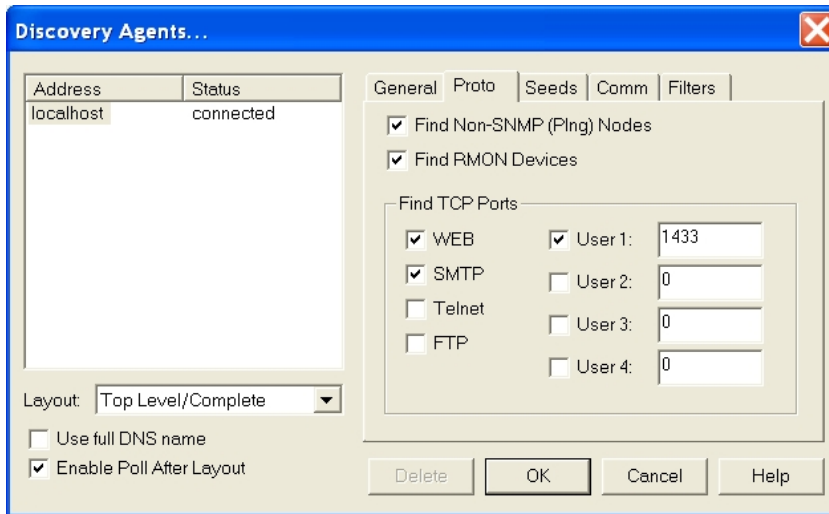
Enabling *Ping Scan Subnets* will force SNMPc to check every IP address on a subnet where SNMPc discovers a device. This is a useful option if you want SNMPc to discover all the devices on a network. If you enable this option you should also set the *Filter* option so that the subnets being 'scanned' can be limited. It is not recommended that you enable Ping Scan Subnets if you are using the periodic Auto discovery.

As default the auto-discovery will restart every hour. This is controlled by the *Auto Restart Time* (hours) setting. In the above example this has been changed to 12. Auto-discovery will now run twice a day. To disable the auto-discovery from restarting set the Auto-Restart time to 0

When SNMPc discovers a new icon it will add it to the map. You can control how the icon is added using the *Layout* option. The default is Top Level/Complete. This will add the device to the existing map and rearrange any existing icons for the 'best fit'. If you have manually moved icons on your map for aesthetic reasons you should select Top Level/Incremental. This will add the icon to the map but will not move any existing icons.

By selecting Discovered Objects as the layout option new devices are added under a new submap named 'Discovered Objects'. This is a useful way of identifying newly discovered devices. You can subsequently move the new icons from Discovered Objects submap to the main map.

## Proto Tab

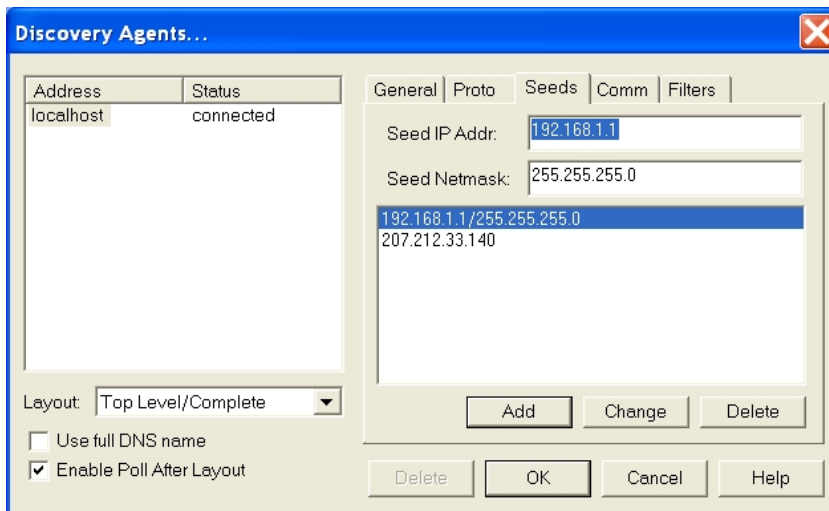


The Proto Tab controls the protocols which SNMPc checks for during Auto-Discovery. In addition to the four predefined protocols you can also manually specify up to four protocols. The above example shows port 1433 being checked (Microsoft SQL Server)

Once a port number has been defined you can also manually configure an icon to monitor the availability of that port. Right-click on the desired icon and select Properties/Attributes. Change the variable "Has User Port' 1, 2, 3 or 4' to Yes

If you unselect *Find Non-SNMP (Ping) Nodes* SNMPc will only find discover SNMP enabled devices.

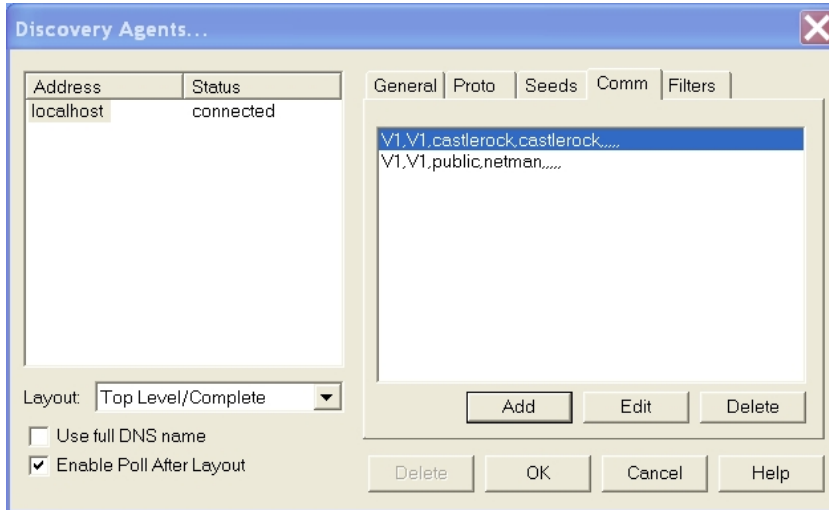
## Seeds



The seeds give the SNMPc auto discovery process a 'starting point'. Ideally the seed should be an SNMP enabled router. This is because an SNMP enabled router will contain information such as ARP and routing tables that SNMPc can interrogate.

If you are looking to discover a specific subnet that the general discovery process has not identified it is useful to add a seed address for that subnet. In conjunction with the 'Ping Scan Subnets' option this should force the discovery engine to find every device on that subnet.

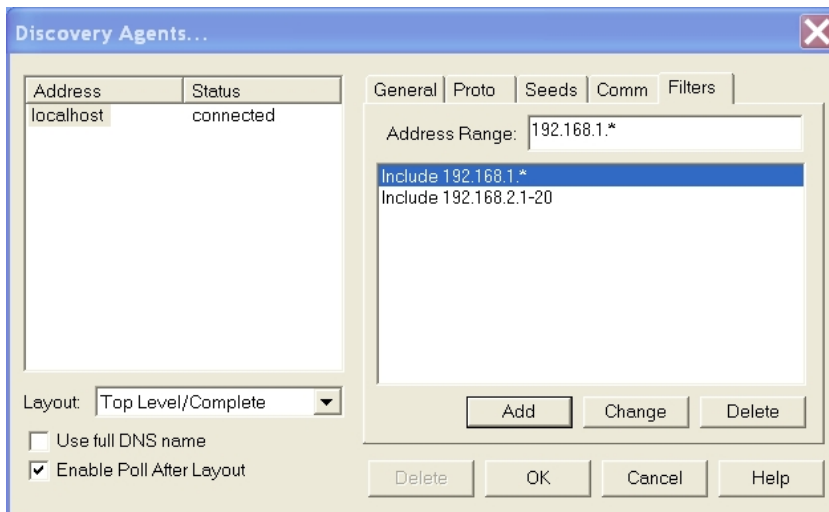
### Comm



The Comm tab allows you to configure SNMPc to try multiple SNMP Community strings to discover SNMP devices. If your network has SNMP enabled devices but SNMPc only recognizes them as ICMP devices you may have the community string configured incorrectly. SNMPc uses 'public' as a default community string.

Select the Add button to define either an SNMP v1, v2 or v3 community string. The above example shows a SNMP community string of 'castlerock' has been added. SNMPc supports multiple community strings.

### Filters



Filters are used to limit the devices which are added to the map. You can configure filters using wildcards. In the above example two filters have been configured:

192.168.1.*	Devices 192.168.1.1 thru 192.168.1.254
192.168.2.1-20	Devices 192.168.2.1 thru 192.168.2.20

More information on troubleshooting the auto-discovery process is contained in the 'Getting Started' guide on page 31.